



*Discover the  
magic of safari*

AT MARA BUSHTOPS



**BUSHTOPS**

SAFARI CAMPS





# LOCATION

.....

**Without doubt one of the world's most spectacular game reserves Kenya's treasured National Park – the Masai Mara – provides a breathtaking backdrop to the ultimate safari experience.**

Taking its name from the region's vast 'dotted plains', the landscape is a constantly moving tableau, teeming with an endless variety of wildlife. In this magnificent wilderness you can immerse yourself in myriad new sensations; waking to the call of lions and buffalo, thrilling at the closeness of wildebeest, zebras and gazelles, basking in the glow of a crackling camp fire at twilight, and dreaming under a dazzling night canopy of stars.

comfort surrounded by one of nature's living masterpieces.

Bordering the Masai Mara, Mara Bushtops is set in its own private Conservancy with a natural salt-lick attracting a constant array of varied wildlife to the Camp itself.

This sensational location creates an oasis of space and beauty where guests reconnect with what really matter: nature, spirit and time.

Nestled on the edge of this intoxicating scene, we've created an oasis of five star luxury for serious safari seekers. Within our Mara Bushtops camp, you'll find an exciting blend of tranquility and adventure where you can relax in first class

Mankind emerged from these lands hundreds of thousands of years ago.

Coming to Mara Bushtops is coming home.





## VENUE

.....

Embracing a philosophy of environmental conservation, Mara Bushtops has been cleverly designed to make the most of natural resources as well as modern amenities. While the camp uses solar power for most of its energy need, no expense has been spared on the fittings provided in the spacious and fabulously appointed luxury tents, open on three sides to the great outdoors and each with its own special view.

Why not lounge away a few hours on your own private wooden deck, where Swarovski binoculars ensure abundant opportunity to view the magnificent game roaming the reserves below?

Or indulge in a languorous afternoon wallow in your own outdoor sunken tub – the perfect prelude to a relaxed Sundowner at twilight, delivered by one of our discreet butlers direct to your veranda.

## EXPERIENCE

.....

Ride in the tracks of the 'big five' on an unforgettable game drive into the heart of the Masai Mara. Travelling in one of our specially converted 4 x 4's, either on your own, in a private party, or with a group of other guests, you'll be in the very best seats for game viewing, while our highly qualified driver-guides will make sure you get some rare glimpses of wildlife that you'll never forget.

You can set off at sunrise for a half - or full day's drive, or, because we're situated on our own vast private Conservancy, you can venture out after dark for a high-adrenalin nocturnal safari.





# MARA BUSHTOPS CAMP & SPA VILLAGE



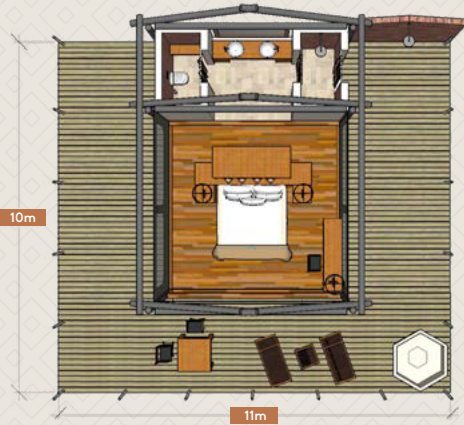
Siana Airstrip







### LUXURY TENT



### TENTS

13 tents (twin and double on request) max. of 1 extra bed (child or adult) can be added to each tent.

2 family tents/Leopard & Rhino Suites, can sleep up to 6 in 2 triples. The Suites overlooks our natural salt lick and have private fire places, lounge and unique sunken terrace.

### CHILDREN

Children are welcome from the age of 7 and we grant children's rates up to the age of 17.

### TENT FACILITIES

Each tent has its own hot tub on the deck, an outside shower, writing desk, fan, sun loungers and dining table.

All tents have safe, hair dryer, 220v AC.

### CAMP FACILITIES

24 hr power and complimentary WiFi throughout.

24 hr butler service and private dining in the tent on request.

Shop with specially selected local crafts and souvenirs.

Infinity swimming pool.

Library.

Complimentary laundry service.

Wheelchair access to some tents is possible - staff are very helpful.

WiFi and mobile reception is generally good but can be intermittent due to the weather.

Check in is at 2pm.

Check out 10am (But we do everything possible to remain flexible).

### DINING

All dining is included and on à la carte basis.

Unique underground wine cellar with Connoisseur section.

All non alcoholic drinks, beers, house wines and selected house spirits included.

Please let us know your dietary requirements in advance. We can adapt to most requests.

### LEOPARD & RHINO SUITES / Family Tents



### AMANI AFRICAN SPA VILLAGE

On-site Amani African Spa Village: complimentary use of the solar-heated swimming pool, cold pool, jacuzzi, sauna, rasul and gym (fees apply for treatments and massages) .

### BEST TIME TO VISIT

July to October for the migration, however the area is excellent to visit at any time as there is a very high concentration of wildlife all year round.

Temperatures range from min. approx 8°C/42°F to max. approx 30°C /86°F.

Rainfall predominantly occurs in November, April and May.

Open throughout the year.

### GUEST SAFETY

Mara Bushtops is not fenced off and guests are requested to be vigilant at all times.

Guests must be accompanied by our security staff when moving from their tent to the main building in the early mornings, evenings and night. Children must be supervised by parents at all times.

### ACTIVITIES

Game drives are on shared basis. Pre booking required for private use (subject to availability). Night game drives (using a heat seeking night vision camera 'flir').

Bush picnics, walking safaris (accompanied by an armed ranger and local Masai), sun downers, sunrise combined with a walk and bush breakfast.

Balloon safari package includes: transfers, pre flight briefing, 1-1.5 hrs balloon flight and champagne style bush breakfast.

Visit to the local school and Masai village.

Visit the Kakiya cave after a walk.

Bushcraft challenge for children.

### PAYMENT TYPES ACCEPTED

**Credit cards:** Visa, MasterCard, Amex

**Currency:** Kenya Shillings & US Dollar bills printed after 2000

### LOCATION

**Airstrip:** Siana

**Altitude:** 1770m

**GPS coordinates of camp:** 1° 30'13.83" S 35° 22'42.88" E





**BUSHTOPS**  
SAFARI CAMPS